

M 85

Gerätesteckdose der
Schutzklasse II
appliance connector for safety class II

Zweipolig ohne Schutzkontakt,
Kabeleinführung rechts
*2-pole plug without earthing-contact,
cable entry right*

EN 60320-1:1996+A1:96+A2:98
C17, 10 A, 250 V~



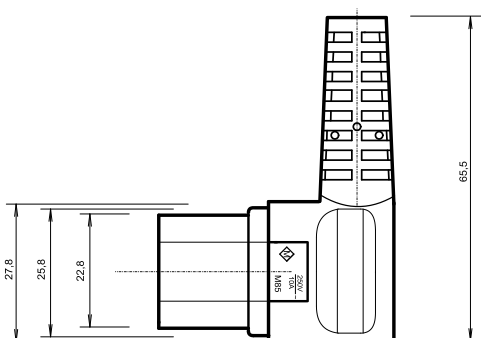
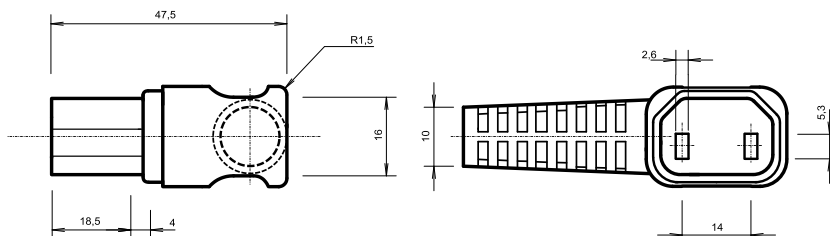
PASSENDE ANSCHLUSSLEITUNGEN

suitable flexible cord types

H05VV-F	2 X 0,75
H05VV-F	2 X 1,00
H05VV-F	2 X 1,50
H05RR-F	2 X 0,75
H05RR-F	2 X 1,00
H05RN-F	2 X 0,75
H05RN-F	2 X 1,00
H07RN-F	2 X 1,00
H07RN-F	2 X 1,50

TECHNISCHE ZEICHNUNG

technical drawing



APPROBATIONEN

approvals

