

M 87

Gerätesteckdose der
Schutzklasse I
appliance connector for safety class I

Zweipolig mit Schutzkontakt,
Winkel-Warmgerätedose T120,
Kabeleinführung rechts
*2-pole plug with earthing-contact,
connector for warm condition T120,
cable entry right*

EN 60320-1:2001 C15, 10 A, 250 V~



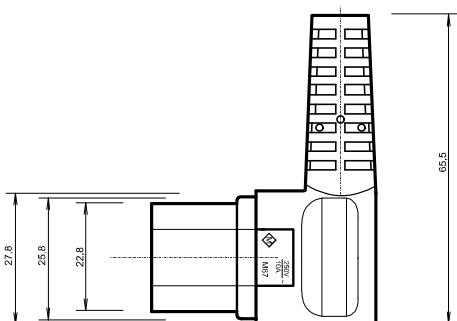
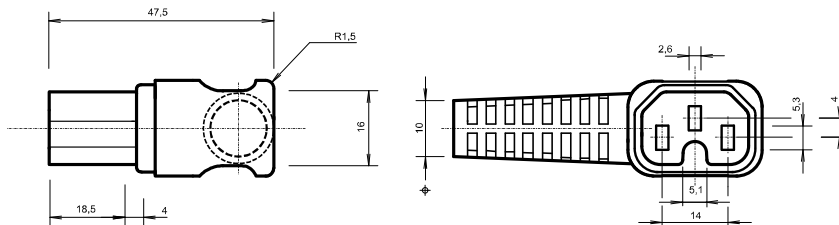
PASSENDE ANSCHLUSSLEITUNGEN

suitable flexible cord types

H05RR-F	3 G 0,75
H05RR-F	3 G 1,00
H05RR-F	3 G 1,50
H05RN-F	3 G 0,75
H05RN-F	3 G 1,00
H07RN-F	3 G 1,00

TECHNISCHE ZEICHNUNG

technical drawing



APPROBATIONEN

approvals

